

vitrinemedia | VM TWO+



VM TWO+

Stand out with our star range of VM LED Poster-holders

SLEEK DESIGN:

The VM TWO+ boasts a clean, elegant aesthetic that complements any environment. Whether in offices, shop windows, or at trade fairs, its seamless design enhances your communication and elevates your display.

MULTIPLE LAYOUT OPTIONS:

Enjoy versatility with portrait and landscape orientations, giving you the freedom to display visuals in the way that best suits your space. With a wide range of formats, the VM TWO+ allows you to create unique, eye-catching layouts that make your window stand out.

DUAL DISPLAY:

Maximize impact with the dual display feature, each with a large opening for easy visual insertion from both the front and back. Simplify updates and improve your display flexibility.

ENERGY EFFICIENT:

The VM TWO+ is 30% more energy-efficient than the VM TWO, offering a sustainable solution for your visual displays. The VM Timer further enhances efficiency by allowing you to schedule On/Off times for each day of the week, ensuring optimal energy use.

COMPATIBILITY

The VM TWO+ is compatible with most Vitrinemedia fixation systems, including the VM TWO Clip and VM TWO Wall Fixture Set. You can also combine it with the L&P family to create a dynamic, engaging window display.

ADVANTAGES



Color
Silver / White
Black / Black



Easy installation
Hanging system



Orientation
Portrait
Landscape



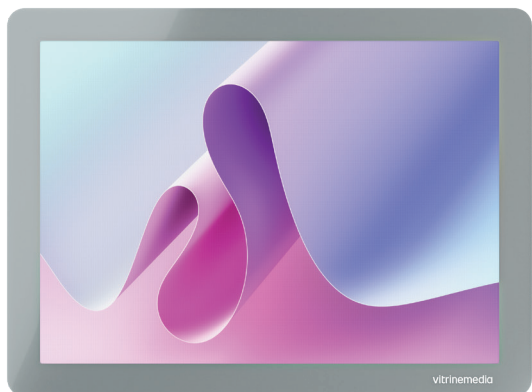
Formats
A4, A3, A2, A1, A0, R-60,
BANNER S, BANNER L



COLORS

SILVER / WHITE

FRONT



BACK

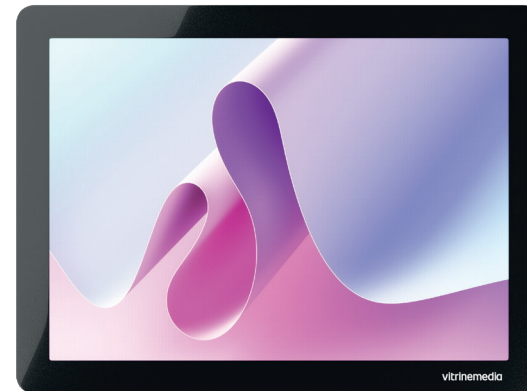


BLACK / BLACK

FRONT



BACK



vitrinmedia



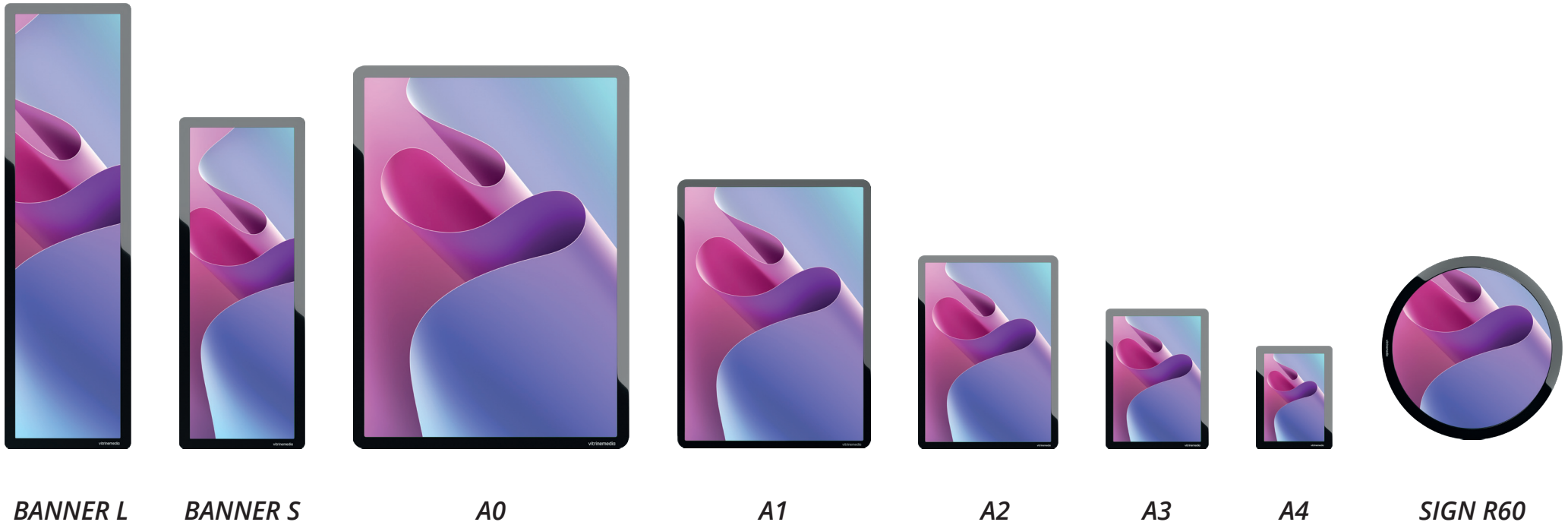
PRODUCT RANGE

Versatile and Seamless: The VM TWO+ Product Range

The VM TWO+ range offers exceptional flexibility for your display needs. All products are fully compatible with our advanced hanging system, allowing for easy integration and sleek installation.

Powered by metallic cables, the VM TWO+ lightbox eliminates visible cords for a clean, professional look. Paired with the XPR rail and power supply, it ensures a seamless and efficient setup.

Mix and match different sizes within the VM TWO+ range to create endless possibilities and a truly unique shop window display.



vitrinemia



OVERVIEW

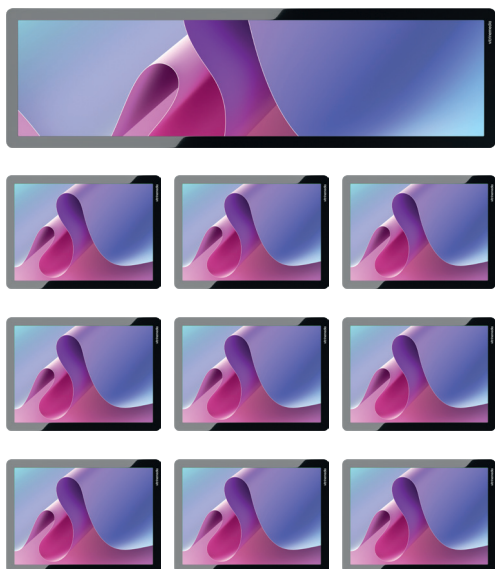
Endless Display Possibilities with VM TWO+

Create a clean, dynamic display by mixing the VM TWO+ formats—combine the L or S banners with the VM TWO+ A3 for a professional, versatile look.

Enhance the energy of your shop window with Light&Play®, designed to attract attention and engage customers.

For a comprehensive guide on setup options and limitations, refer to the user manual.

Banner L
and
VM TWO+ A3



Banner L
and
VM TWO+ A3



Banner S
and
VM TWO+ A3



VM TWO+ A2
and
VM TWO+ A3



Maximum quantity per column

Format	A4	A3	A2	A1	A0
Quantity	6	5	3	2	1

vitrinemia



NEW

BIG OPENING

BE REMARKABLE

Embrace Openness: A Game-Changing Feature for 2025

Introducing the innovative large opening, designed to make inserting visuals easier than ever.

Whether from the front or back, this feature allows for quick and effortless display updates, offering you unmatched flexibility and efficiency in your space.



vitrinemedia

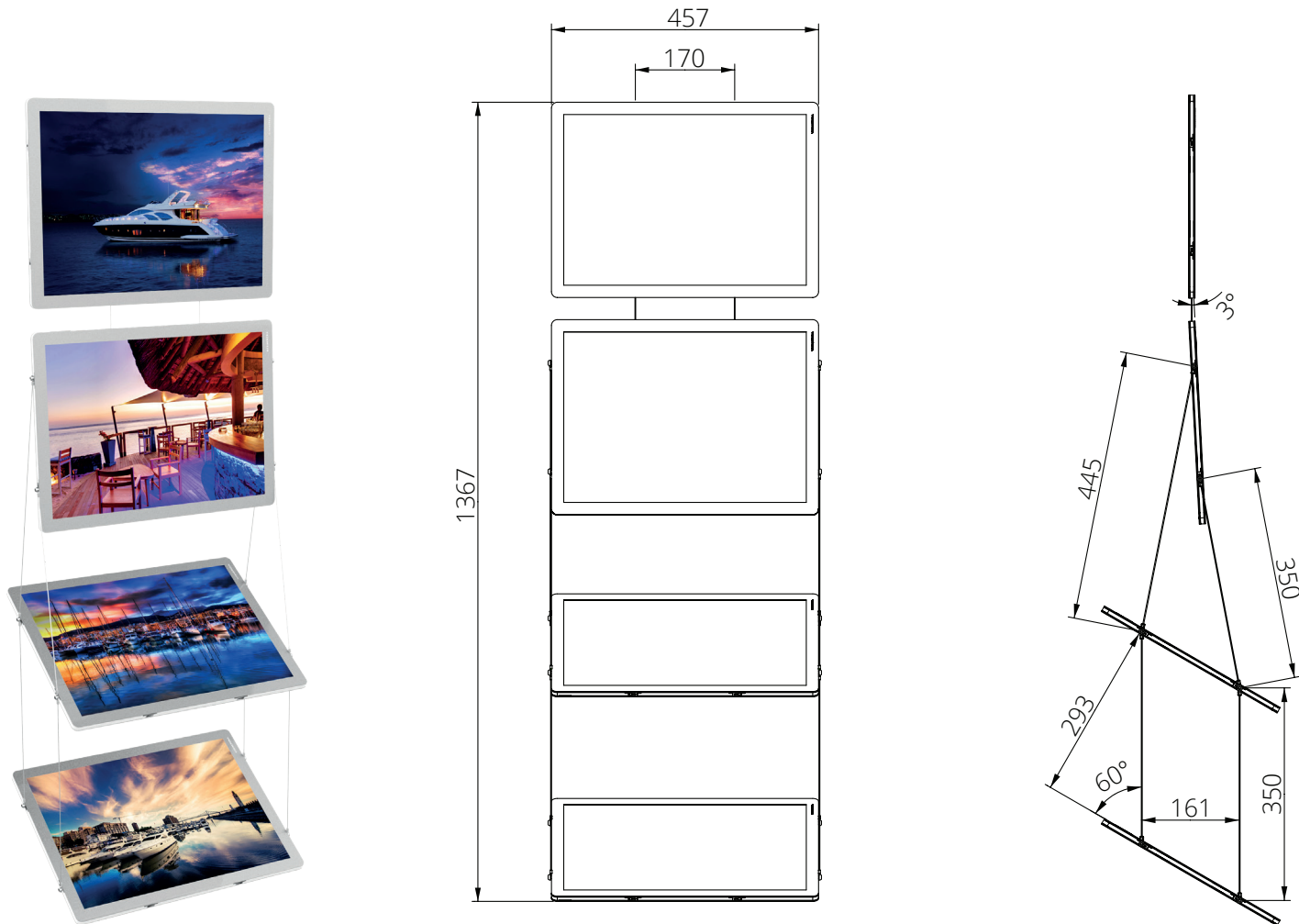


TILTED SET

Maximize Visibility with the Tilted Set

The tilted set is fully compatible with both VM TWO+ A4 and A3 formats, allowing you to display content at a 60° angle.

This makes it easier for customers to view from outside, even when the lightbox is placed near the ground.

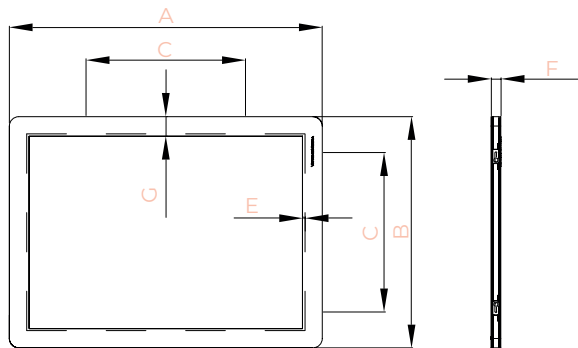


vitrinemia

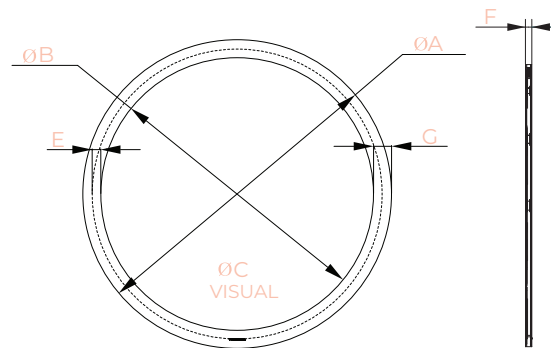


DIMENSIONS

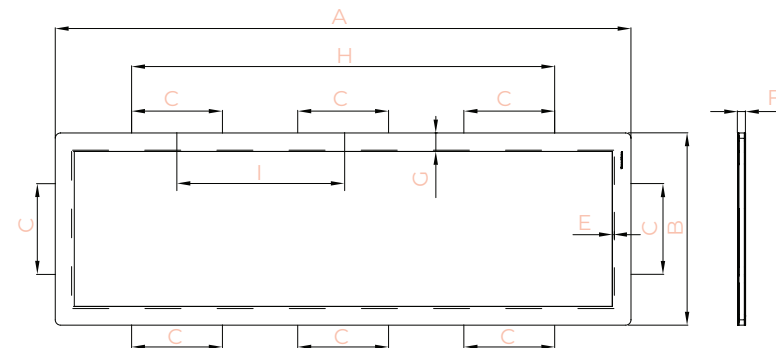
A0-A4



R-60



BANNER



	A	B	C	E	F	G	H	I
A4	334	247	170	2.5	10	21	-	-
A3	457	334	170	2.5	10	21	-	-
A2	631	457	170	2.5	10	21	-	-
A1	878	631	170	2.5	12	21	-	-
A0	1251	903	560	4	14	35	-	-
R-60	600	530	564	17	12	35	-	-
BANNER S	1082	412	170	4	12	35	795	-
BANNER L	1454	412	170	4	12	35	1167	498.5

(mm)

SPECIFICATIONS

	Consumption (W)	Brightness (LUX)		Net Weight (kg)
		Front	Back	
A4	3.84	6400	3300	0.860
A3	6.03	5200	2400	1.510
A2	8.68	3400	1700	3.025
A1	17.94	4000	2300	7.130
A0	23.42	2000	1000	17.246
R-60	15.84	3200	1600	5.330
BANNER S	18.55	3500	1800	5.410
BANNER L	24.00	4000	2000	7.450



vitrinemedia



collaboration

Chez Vitrinemedia, c'est notre capacité à **réunir les talents de l'entreprise**, à travailler tous ensemble pour apporter le meilleur de nous-mêmes auprès de nos clients.

Chez Vitrinemedia, c'est notre flamme, nos vies que dans le travail, c'est le **moteur** qui nous pousse à **vivre et à s'engager pleinement** dans nos tâches quotidiennes pour un travail bien fait.

innovation

Chez Vitrinemedia, c'est notre soie, c'est notre capacité d'adaptation et d'évolution, c'est une **évidence pour assurer la pérennité de l'entreprise**.

ambition

Chez Vitrinemedia, c'est notre volonté d'avancer, continuellement, **avoir le désir de réaliser de grandes choses** et tout donner pour les accomplir pleinement.

visibleads

Générez de l'argent grâce à vos écrans

- Avec près de 10 000 écrans LCD installés en France, nous sommes les seuls à pouvoir vous proposer de générer jusqu'à 45€ par campagne, par écran et par semaine, sans nécessité d'intervention technique de votre part.
- **En un an, plus de 300 000€ ont été reversés à nos clients abonnés !**

vitrinemedia



VM TWO+

vitrinmedia

50 Route de la Reine - 92100 Boulogne-Billancourt
FRANCE | +33 (0)1 49 21 00 61 | hello@vitrinmedia.com
www.vitrinmedia.com